

THE RIGHT
TIME FOR
NEW ENERGY.

For further information, detailed advice and a no-obligation quote,
contact:

Distributor's stamp

As at: 09/2013. Errors excepted. Subject to change without notice.

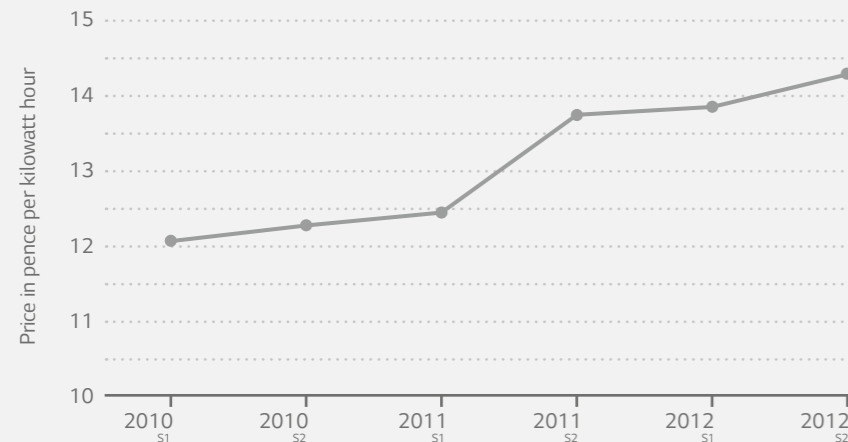
Good for the environment and your wallet

WHY YOU SHOULD INVEST IN SOLAR ENERGY NOW

PROFITABLE
INVESTMENT

- The possibility of further electricity price increases in the coming years cannot be ruled out.
- Become independent and take control of your energy budget.
- With LG MonoX™ NeON modules, you will generate valuable energy every day and save money.
- Enjoy double benefits and use all the electricity produced for your home.

Electricity price development (2010 – 2012)



Sources: <http://epp.eurostat.ec.europa.eu/portal/page/portal/energy/data/database>

MonoX™ NeON



For further information, visit
www.lg-solar.com

LG Electronics Deutschland GmbH
EU Solar Business Group
Berliner Straße 93
40880 Ratingen/Germany
E-mail: solar@lge.de



MonoX™ NeON

NO MORE RISING
ELECTRICITY
COSTS.





Innovation by tradition

WHY LG IS A RELIABLE PARTNER FOR YOU

PREMIUM PRODUCTS

High-performance solar modules with state-of-the-art technology and design.

SURE GUARANTEE

With sales of 30 billion pounds in 2012, LG Electronics is a strong partner and warrantor who you can rely on now and in the future.

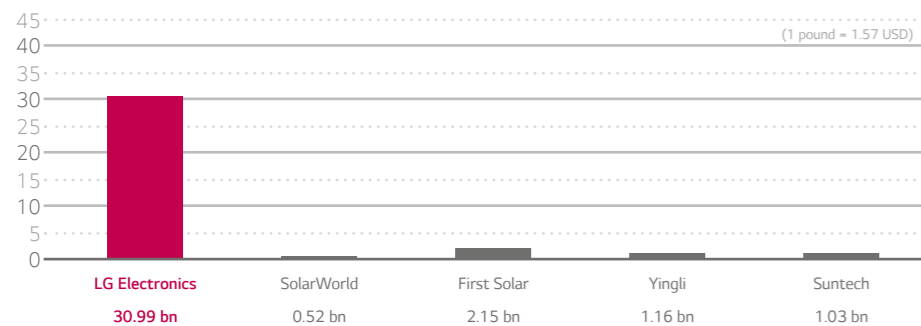
ALWAYS AVAILABLE

There is always a competent contact available who will be happy to help you in our European head office in Ratingen near Dusseldorf.

EXTENSIVE EXPERIENCE

Founded in 1958, LG Electronics is recognized as a global leader and technology innovator in home entertainment, mobile communications, household appliances, information system products, air conditioning systems, lighting and solar panels.

The warrantor's 2012 sales in billions of pounds

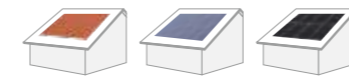


A good decision always pays off

WHY LG MonoX™ NeON GIVES YOU A BETTER DEAL

Get the best out of your rooftop now:

Invest in the future with your own electricity and the new LG MonoX™ NeON high-performance module. Your total financial advantage of electricity cost savings and feed-in earnings will be up to £ 16.336* over the next 20 years.



	Without PV installation on rooftop	PV installation with 250 Wp standard modules	PV installation with LG NeON 285 Wp modules	Advantage of LG NeON vs. standard modules
20-year electricity demand for 4 person household	76.000 kWh	76.000 kWh	76.000 kWh	-
Installed PV power	0 Wp	3.500 Wp	3.990 Wp	+ 490 Wp
Produced PV power over 20 years	0 kWh	59.500 kWh	67.830 kWh	+ 8.330 kWh
Possible electricity savings and FIT payments over approx. 20 years	£ 0	£ 14.330	£ 16.336	+ £ 2.006
Reduced CO ₂ emissions in tons	0 t	27,2	31 t	3,8 t

The bottom line: With limited roof space often being an issue in the UK, MonoX™ NeON 285 Wp modules nevertheless allow you to achieve a 4 kWp solar system with only 14 modules. This means 8.000 kWh more electric power compared to a system with conventional 250 Wp module over a period of 20 years. In other words you're able to spend more money on something that you like.

*Assumptions: Simplified simulation for 24 m² of available roof area (14 modules), 40% household consumption. Export Tariff = £ 0,0464/kWh Average electricity procurement costs over 20 years = £ 0,16/kWh, 100% feed-in. Feed-in tariff over 20 years = £ 0,149/kWh, electricity requirement for 4-person household = 3.800 kWh p.a., average specific PV yield = 850 kWh/kWp, both for LG MonoX™ NeON and standard 250 Wp modules. An additional yield can be expected from LG MonoX™ NeON. Without interest and taxes. CO₂ emissions avoided = 0.5 kg per kWh. Source: INTERNATIONAL ENERGY AGENCY, <http://www.iea.org/co2highlights>

Many advantages on one rooftop

WHY THE NEW LG MonoX™ NeON IS THE RIGHT MODULE FOR YOU

25 YEAR GUARANTEE

Simply future-proof: You get a 25-year linear performance guarantee and a 10-year product guarantee for all modules. That is a genuine LG guarantee – one that you can rely on.

HIGHER YIELDS

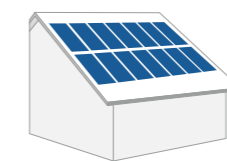
Simply better: The latest cell technology from LG – with bifacial cells – ensures greater energy output.

+14% OUTPUT

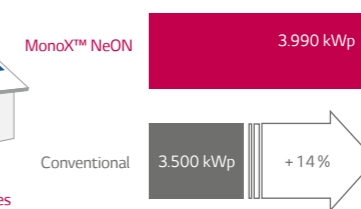
Simply more: 14% more output per m² than conventional solar modules.

TEST WINNER

Simply award-winning: The strengths of the LG MonoX™ NeON modules have also been recognized by independent bodies – winning top industry awards.



Installation with 14 modules



Simply arrange a no-obligation consultation. We will give you all the information you need about LG MonoX™ NeON and show you how you too can profit from solar energy.